

ST. VINCENT GREENWAY, INC.



BOARD OF DIRECTORS

TERRY WEISS
PRESIDENT

BISHOP GEORGE WHITE, JR.
VICE PRESIDENT

KATHLEEN SORKIN
TREASURER

SABRINA BALDWIN
SECRETARY

MARIE COLEMAN
KAY GASEN
ROBERT KOFF
GEORGE ROBERTS
MARGARET SHERRADEN
KEVIN TRIGGS
EVAN WEISS
ALAN WITTE

GRG LIAISON

NANCY THOMPSON

St. Vincent Greenway, Inc (SVGI) is a not for profit 501(c)(3) corporation established in January 2011. Its mission is to serve as a catalyst for advancing the health, safety, vibrancy and interconnectivity of the communities and neighborhoods along the St. Vincent Greenway.

St. Vincent Greenway is a linear park being developed and constructed by Great Rivers Greenway (GRG). GRG was established as the Metropolitan Park and Recreation District in November 2000 by voter approved passage of the Clean Water, Safe Parks and Community Initiative in St. Louis City, St. Louis County and St. Charles County.

St. Vincent Greenway will extend seven miles beginning in NorthPark, through the University of Missouri-St. Louis campus, through St. Louis County's St. Vincent Park, then through Pagedale and Wellston. It will enter the City of St. Louis at Skinker Boulevard and Etzel Avenue, continuing through the Ruth Porter Park, then traveling down DeBaliviere Avenue to Forest Park to the Missouri History Museum entrance.

SVGI was formed to encourage use of the trail which, in turn, could act as a catalyst to improve the quality of life in all areas it traverses.

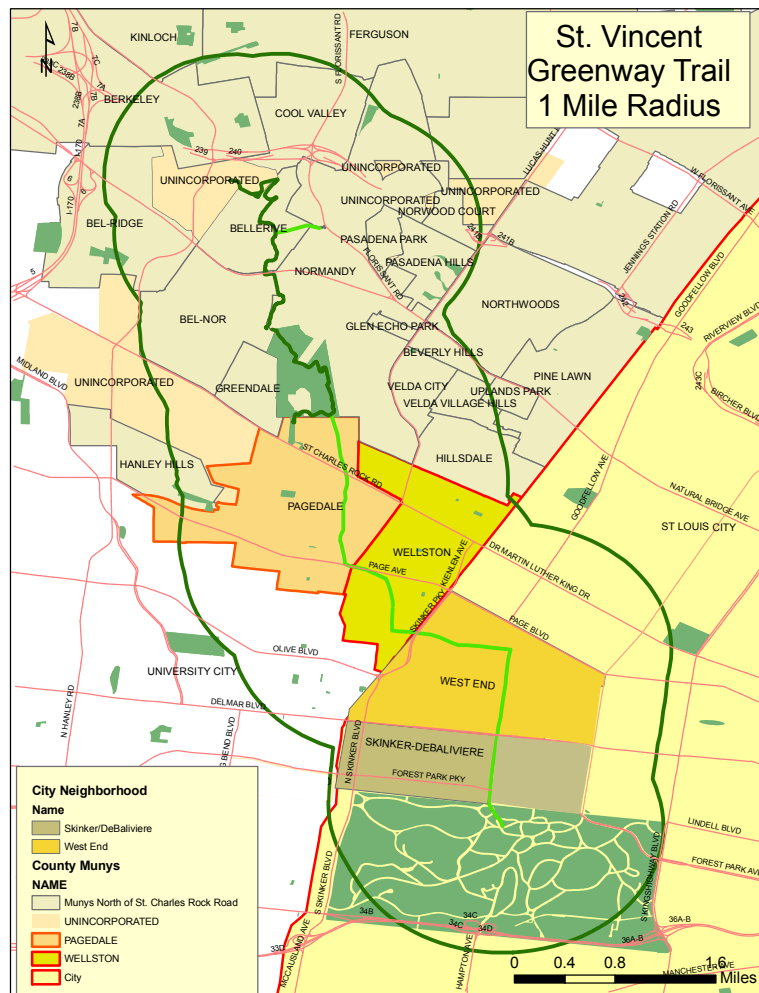


Our first event--a Halloween Party in St. Vincent Park including a petting zoo, pony ride, arts and crafts, and a candy hunt.

In addition to social programs, the organization will focus on beautification, as well as economic and community development. The latter will be based on community needs and desires and performed in partnership with residents, for profit and not for profit organizations.

During our first year we:

- **Were chartered by the state of Missouri;**
- **Obtained 501(c)(3) status;**
- **Established our Board of Directors and Committees;**
- **Developed a mission statement;**
- **Created our web site, logo and tag line;**
- **Engaged in strategic planning;**
- **Partnered with the University of Missouri-St. Louis to conduct community engagement;**
- **Became charter members of the Community Builders Network of Greater St. Louis;**
- **Determined our outreach boundaries (see map below);**
- **Had a highly successful neighborhood Halloween Party in St. Vincent Park.**



In 2012 we plan to initiate our community outreach program, start pursuing physical projects, begin raising capital for future activities, and continue our social programming.